

eruptions). These dates are not measured but assumed, working from a belief about history that ignores Noah's Flood.



CHECK IT OUT

The standard interpretation that you see for the Glass House Mountains assumes evolution and long ages. People just accept it because other people believe it—a self-sustaining cycle of social reinforcement. This brochure shows how the same evidence can be interpreted assuming the Bible presents true history—the reliable Word of the living God who made all things.

That same Bible also teaches that since Adam's fall into sin, people are by nature biased against God. The Bible also teaches that the creation was originally 'very good', and that death, disease and suffering are ultimately due to Adam's sin, in which we all continue. Belief in evolution ('everything made itself') is the ultimate way to suppress the truth that all of us know deep down—that nothing as complex as this universe could ever have come into being without intelligence and planning. Your decision about creation or evolution is one of the most important you could possibly make, because it affects your purpose and destiny. You owe it to yourself to check this out some more.

THIS PAMPHLET?

This pamphlet and others like it have been produced by *Creation Ministries International* and distributed by individuals and churches to help spread awareness of this otherwise greatly censored information. CMI is a non-profit Christian ministry organisation, not linked to any particular denomination or group but with wide support from a huge range of Bible-believing churches. CMI employs a number of qualified Ph.D. scientists and researchers. Our magazine, *Creation*, has subscribers in over 110 countries.

FIND OUT MORE

You owe it to yourself to check out the information from a creation viewpoint, not just to hear it 'predigested' through the common 'lenses' of our age.



CREATION MAGAZINE

Creation family magazine brings you easy-to-read articles connecting creation and the Bible to the real world.

BOOKS

The Creation Answers Book and *Refuting Evolution* are two of the most informative books on Bible/science issues you'll ever read.

For more information, news and articles on creation, evolution and the Glass House Mountains:

CREATION.com

To contact Creation Ministries International go to: creation.com/contactus

GLASS HOUSE MOUNTAINS



GLASS HOUSE MOUNTAINS

Volcanic eruptions late in Noah's Flood



South of the Maleny-Mapleton plateau just north of Brisbane, remarkable volcanic plugs known as the Glass House Mountains dominate the Sunshine Coast hinterland, a popular tourist destination in Australia.



FIERY SKIES

More than a dozen volcanoes pushed their way up through thick almost-horizontal layers of sandstone. Imagine what it would have been like as they were erupting, spewing red-hot lava and darkening the sky with ash and fumes.

The rock from those volcanoes (called rhyolite and trachyte) is typically yellow, pink and pale grey. The molten lava would have been thick like porridge, leaving the steep-sided plugs of rock.

The tallest, Mt Beerwah, displays 'The Pipe Organ' on its northern face. As the plug cooled it cracked into long columns, evidence the lava extruded rapidly in one large volume.

At the same time, lava of a different kind was spewing over the sandstone to the north and west. Rich in iron and magnesium, the lava was hotter and more fluid, running like water and solidifying into thick, black basalt layers that produce fertile red and brown soils.

VAST SAND DEPOSITS

Around the Glass House Mountains the countryside is made of sandstone, visible in road cuts along the highway. The Landsborough Sandstone, as it's called, is part of an interconnected series of sedimentary basins forming the Great Australian Basin, that stretch thousands of kilometres to the north, west and south, across much of the eastern half of Australia.

These sedimentary strata were deposited from massive surges of water flowing over the area as the floodwaters were rising during Noah's Flood (Genesis 7:17-24). Footprints of dinosaurs fleeing the catastrophe are found in sandstone surfaces near Brisbane and west near Winton. The remains of plesiosaurs and dinosaurs that perished in the Flood, some remarkably well-preserved, have been discovered in many places.

CAPTAIN COOK NAMED THE GLASS HOUSE MOUNTAINS ON 17 MAY 1770, AS HE SAILED UP THE EAST COAST OF AUSTRALIA IN HIS SHIP "ENDEAVOUR".

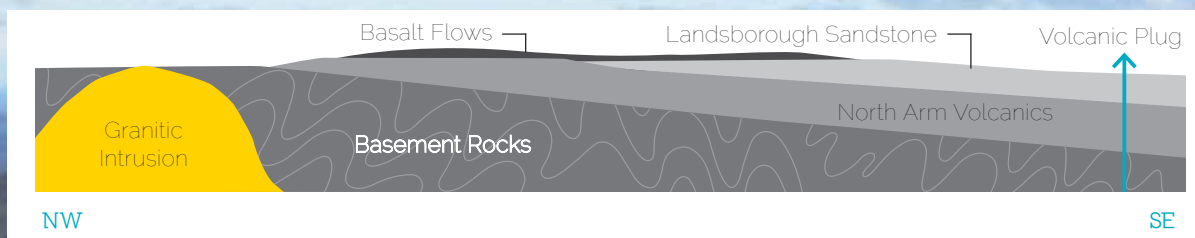
EROSION OF THE LANDSCAPE

Just before the Glass House volcanoes erupted, the landscape had been shaved flat by the waters of the Flood receding into the ocean in wide sheets. The extensive plateau they formed is still visible. After the eruptions, hundreds of metres of sandstone were eroded from around the volcanoes. This was during the channelized flow phase late in the Flood. Much of the basalt plateau was also eroded leaving a remnant from Maleny to Mapleton. The waters carried the debris out of the area.

What caused the eruptions? The lowering of the Pacific Ocean to the east. This caused the floodwaters to flow off Australia (Genesis 8: 2-14), and put a bending stress along the eastern side of the continent. It created a network of volcanoes from Cairns in the north to Victoria in the south.

FORGET THE DATES

The Glass House Mountains provide a graphic insight into the drama of the biblical Flood (Genesis 6-8). But, to make the connection you need to disregard the dates you see (such as 25 million years given for the



Geological cross section of the area from the Glass House Mountains north beyond the Maleny-Mapleton Plateau—about 25 km.